

GEN-2008-123N
Impact Restudy for
Generator Modification
(Turbine Change)

September 2014
Generator Interconnection



Executive Summary

The GEN-2008-123N Interconnection Customer has requested a modification to its Generator Interconnection Agreement from fifty-two (52) GE 1.7MW wind turbine generator to a combination of forty eight (48) GE 1.715MW and four (4) GE 1.79MW wind turbine generators. Since the GE 1.715MW and the GE 1.79MW wind turbine generators have identical electrical characteristics as the GE 1.7MW wind turbine generators, a restudy was not performed for this change request. The results of the restudy performed for GEN-2008-123N (see [GEN-2008-123N Impact Restudy for Generator Modification \(Turbine Change\)](#), posted 8/19/2013) are still valid for this generation interconnection request. As the original request for interconnection is for 89.7MW, the requested change is not considered a Material Modification.

A revised one-line drawing of the project is shown in Figure 1.

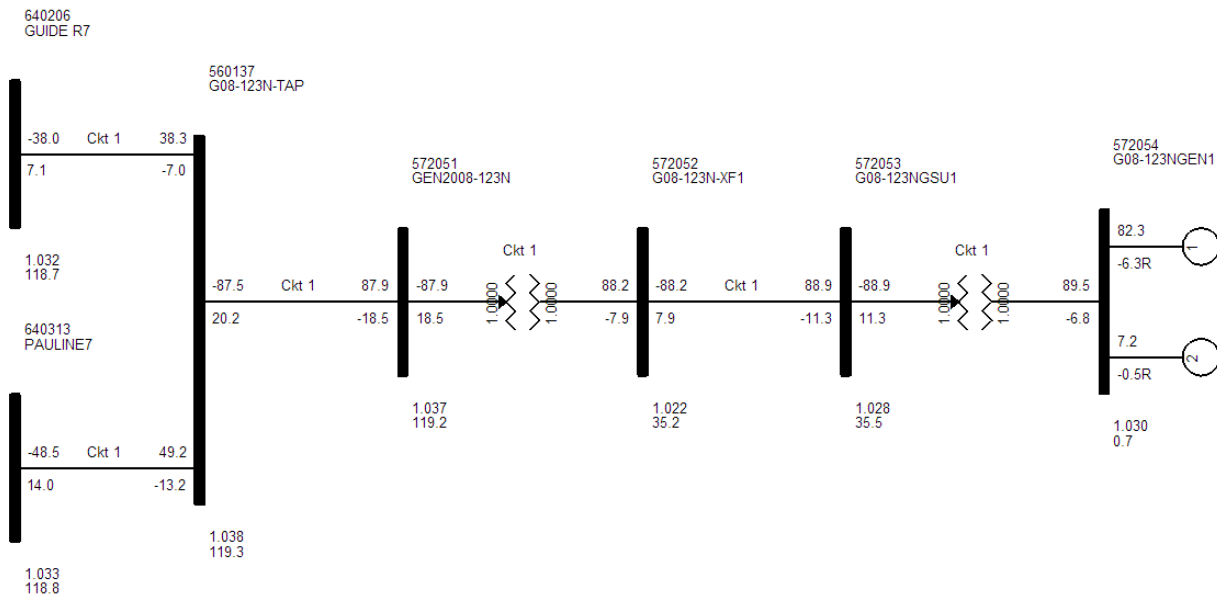


Figure 1: GEN-2008-123N one-line drawing

With the assumptions outlined in this report and with all the required network upgrades from the GEN-2008-123N GIA in place, GEN-2008-123N with the GE 1.715MW and the GE 1.79MW wind turbine generators should be able to reliably interconnect to the SPP transmission grid.

Nothing in this study should be construed as a guarantee of transmission service. If the Customer wishes to obtain deliverability to a specific customer, a separate request for transmission service shall be requested on Southwest Power Pool’s OASIS.